

READING MYSTERY

ONCE UPON A CRIME: STOLEN TIME



By Mrs J's Resource Creations ©

Thank You for Downloading 😊

Thank you for your purchase. I sincerely hope both you and your students enjoy this product. Your feedback would be appreciated so that I can make my resources better. Please do not hesitate to contact me if you need me to make any adjustments to this resource for you.

Let's stay connected:

Follow my store to stay updated on more FREEBIES and new products @ [Mrs J's Resource Creations](#)

Click the links below to find my:

[Blog](#)

[Pinterest](#)

[Facebook](#)

Terms of Use

- All pages of this packet are copyrighted. You may not create anything to sell or share based on this packet.
- This packet is for one teacher use only. Do not share with colleagues. If they like the packet please send them to my TPT store. TPT is about teachers supporting teachers 😊
- You are permitted to share the cover image of this packet on your blog or via social media as long as you link back to my store on TPT showcasing the product or link to the product. My store link is <http://www.teacherspayteachers.com/Store/Mrs-Js-Resource-Creations>

Thank you so much for your download. I truly appreciate your business. 😊

[Mrs J's Resource Creations](#)

PREPARATION

- Print and photocopy pages 4-11 (pg4 and 11 are optional to print if you want to save paper). Staple together into booklets or put into a case file folder.
- Page 5 is a 'Possible Suspects' list, which students will need to keep handy for eliminating characters as they discover clues throughout this reading mystery.

The worksheets must be completed in the order I have put them in.

HOW TO USE

Read page 4 to introduce the activity and state the case for your detectives.

Students will need to refer back to the suspect list (pg. 5) as they investigate. By the end, they should be able to narrow the suspect list down to just one character. The last character remaining (if done correctly) is the thief!

Each activity page has a reading component, which is followed by either some questions, tasks or puzzles to solve. The answering section requires students to fill in letters on the blank lines. Referring back to the reading text will help them with the spelling and solving the missing letters to complete responses/statements or special words. **I recommend making it a requirement to read first, or set a timer for reading time before students are allowed to pick up a pencil to complete the activities. Also, instruct students to highlight the evidence in the passage text to show where the answers are found.**

To crack the clue codes: the missing letters on the blank lines go into the empty boxes with the matching number underneath the line. (If you are familiar with my math mysteries, think of it as a reverse way to do this.) I've provided some examples for the first letter in the clues.

Page 11 is an optional way to declare who the thief is, with an opportunity for some extra writing. Encourage your students to write their elimination reasoning with each clue. Tick the 'Well Done' box if the student declared the correct suspect and you are satisfied with the evidence (clues presented). Tick the 'Oops! Try Again!' box if they get the culprit wrong or do not have the proper clues listed. You could skip this part and just have your students present their eliminated suspect list to check if they are correct.

If your students are struggling with this activity, I recommend pausing frequently to discuss in groups or as a class.

ANSWERS

Answers and an elimination guide are provided on pages 12 – 17.

AWARDS

On page 18 you will find some newspaper article awards. You can give these to students who solve the case correctly and provide enough evidence of course! Keep these hidden until solved.

If you need help, have any questions, or notice an error in my work please email me on

JJResourceCreations@gmail.com

Thanks! ☺

TALE TOWN'S DETECTIVE AGENCY HEADQUARTERS

Little Red enters your office . . .

Little Red



"Detective, I need your help! Last night someone broke into Tale Town's Tower Clock and stole both the short and long hands off the clock's face. I'm not sure if you knew this, but those hands have the power to mess with the time all over town. The thief already has started messing with the time, look at your watch Detective!



Looking down at your watch, you realize that Little Red is right! The time is saying 12:00, but you just ate breakfast!

Little Red

"It's so annoying! I missed two appointments this morning because of the time on my watch flicking back and forth like a yo-yo. If you look outside, you'll see that the town is starting to become frustrated and anxious too. Detective, could you please help solve who stole Tale Town's Clock Hands?



You grab your detective kit and agree to help solve this case.



"Thank you, Detective! I'll meet you at the bottom of Tale Town's Tower Clock in ten minutes. Probably don't look at your clock for the time.

On the following pages you will be visiting locations and discovering clues. As you complete each page, go over your possible suspects list to see if any information discovered eliminates a character from being the clock tower thief.

POSSIBLE SUSPECTS

Suspect	Appearance	Character Traits	Has the ability to Fly? Yes/No	Clothing Colors	Motive
Little Red	<ul style="list-style-type: none"> - Brown Hair - Blue Eyes - Short - Medium Sized 	<ul style="list-style-type: none"> - Curious - Friendly - Anxious - Adventurous 	NO	<ul style="list-style-type: none"> - Red - Blue - White 	Wants a second chance
Zelda the Witch of the West	<ul style="list-style-type: none"> - Red Hair - Green Eyes - Tall - Medium Sized 	<ul style="list-style-type: none"> - Lonely - Unfriendly - Sly - Cruel 	YES	<ul style="list-style-type: none"> - Black - Green - Red 	Wants to cause chaos in Tale Town
Nivens McTwisp the White Rabbit	<ul style="list-style-type: none"> - White Fur - Blue Eyes - Short - Small Sized 	<ul style="list-style-type: none"> - Anxious - Energetic - Rude - Impatient 	NO	<ul style="list-style-type: none"> - Orange - Red - Gray 	Never wants to be late again
Bert the Big Bad Wolf	<ul style="list-style-type: none"> - Black fur - Brown Eyes - Tall - Large Sized 	<ul style="list-style-type: none"> - Cruel - Sly - Strong - Energetic 	NO	<ul style="list-style-type: none"> - Red - Green - Black 	Wants revenge
Rumpelstiltskin	<ul style="list-style-type: none"> - Blonde Hair - Brown Eyes - Tall - Medium Sized 	<ul style="list-style-type: none"> - Cheerful - Sly - Funny - Selfish 	NO	<ul style="list-style-type: none"> - Brown - Red - Orange 	Wants revenge
Pinocchio	<ul style="list-style-type: none"> - Black Hair - Blue Eyes - Short - Small Sized 	<ul style="list-style-type: none"> - Friendly - Dishonest - Foolish - Selfish 	NO	<ul style="list-style-type: none"> - Orange - Blue - Red 	Wants a second chance
Granny Smith	<ul style="list-style-type: none"> - White hair - Blue Eyes - Short - Medium Sized 	<ul style="list-style-type: none"> - Courageous - Generous - Calm - Caring 	NO	<ul style="list-style-type: none"> - Green - Blue - White 	Wants to be young again
Polly Piggles	<ul style="list-style-type: none"> - Blonde Hair - Brown Eyes - Short - Medium Sized 	<ul style="list-style-type: none"> - Foolish - Caring - Greedy - Cheerful 	NO	<ul style="list-style-type: none"> - Red - Blue - Black 	Wants revenge
Peter Pan	<ul style="list-style-type: none"> - Red Hair - Brown Eyes - Tall - Medium Sized 	<ul style="list-style-type: none"> - Adventurous - Foolish - Sly - Cheerful 	YES	<ul style="list-style-type: none"> - Green - Red - Brown 	Wants to be young again
The Mad Hatter	<ul style="list-style-type: none"> - Red Hair - Green Eyes - Short - Medium Sized 	<ul style="list-style-type: none"> - Foolish - Friendly - Anxious - Generous 	NO	<ul style="list-style-type: none"> - Green - Brown - Red 	Wants a second chance

Solve the clues and then cross the suspects off the list until only one place remains! The last suspect remaining is the clock thief!

Go to your suspect list and use the clue discovered on this page to cross off who is no longer a suspect.

2. VISIT LOCATION: Little Red's Cottage

Greeted by Little Red's grandma, you're pleased to be served some delicious lemonade and strange biscuits.



Granny Smith



"This time mess is making baking very difficult. Even when I set my timer on, it pauses and rewinds back and forth like crazy! So, please forgive me if the biscuits are not the best tasting today."

Little Red



"Granny, did you see anyone around our cottage yesterday? I think someone stole the clock tower key and then must've put it back before the morning!"

Granny Smith



"I heard some rustling around the garden late last night. It wasn't windy, so I went to take a look to see if that cheeky rabbit was back stealing my berries. All I found was a broken thorny branch fallen from my rose bush. A button was caught on one of the thorns."

Little Red



"OH! The button is probably off the thief's clothing! "

CLUE 2: Fill in the missing letters to complete the CAUSE and EFFECT statements below. Then match the letters with the numbers into the empty boxes to reveal a clue!
Use the reading text above to answer the questions below. Highlight where you find the answers in the text above as evidence.

CAUSE: Gra₁ny's tim₂er keeps flicking b₃ck and f₄rth.

EFFECT: So, Granny is finding it₅ ifficult to₆ ake.

CAUSE: Granny₇ eard some₈ ustling aro₉nd the gar₁₀en la₁₁e last₁₂ ight.

EFFECT: She went to check if that cheek₁₃ ₁₄abbi₁₅ was back stealing berries.

CAUSE: The thie₁₆ ₁₇scaped bef₁₈re Granny got to the gard₁₉n.

EFFECT: All Granny fo₂₀nd was a broke₂₁ thorny branch with a bu₂₂ton.

CAUSE: The th₂₃ef's clo₂₄hing got caught on a thorny r₂₅se bush branch.

EFFECT: A button was left behin₂₆ on one of the t₂₇orns.

13189

1623125

81926

2227142310

251

15717

6201124421



3. VISIT LOCATION: Down Muffin Lane

You and Little Red are walking down Muffin Lane. You notice a crowd of angry citizens.

Nivens McTwisp



"It's all your fault! You are the one with the key to the tower; and the only one with access! I've been late for three very important dates! "

Polly Piggles



"Why would someone steal your key and then go to the effort of returning it?"

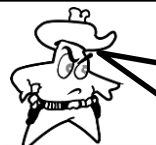
Little Red



"No! It wasn't me! Someone stole my clock tower key and returned it!"

"The thief must be trying to make it look like it was me!"

Sheriff Star



"Little Red, you are under arrest for the theft of Tale Town's Clock Tower Hands and for messing with the time. You will remain behind bars until you confess to the crime or proven innocent!"

As Sheriff Star gives the order, Little Red is handcuffed and taken to a cell in Tale Town's dungeon. Little Red looks at you helplessly as she pleads her innocence.

CLUE 3 - Fill in the missing letters to complete the answers in the comprehension questions below. Then match the letters with the numbers into the empty boxes to reveal a clue!

Use the reading text above to answer the questions below. Highlight where you find the answers in the text above as evidence.

- 1. Why is Nivens McTwisp angry with Little Red? **Because he blames Little Red for being**
la__e to t__ree very important da__es.
1 2 3
- 2. Why doesn't Polly Piggles believe Little Red? **Because Polly doesn't understand w__y the**
thief would go to the __f__ort of returning the key.
5 6
- 3. What does Little Red think the thief is doing? **The thief is tr__ing to make it look like it was**
h__r who __tole the clock tower hands.
8 9
- 4. How long will Little Red remain behind bars? **Unti__ she confe__ses to the cr__me or is**
proven __nnocent.
10 11 12 13

<div></div>	<div></div>	<div></div>	<div></div>	<div></div>	<div></div>	<div></div>	<div></div>	<div></div>	<div></div>	<div></div>	<div></div>	<div></div>
3	2	5	1	4	12	8	6	13	9	11	10	7

23	18	12

5. VISIT LOCATION: The Three Little Pigs Café

You head over to The Three Little Pigs Café to buy some food.

Little Miss Muffet



"With time all over the place I feel like as if I am going crazy! No wonder why there is so much chaos in town. I don't understand why anyone would bother to play with time like this, all it does is drive everyone crazy."

Georgie Porgie



"It's so strange! I looked so much older an hour ago, now I look years younger. This is all so confusing!"

Little Miss Muffet



"I don't even know if it's breakfast, lunch or supper. I guess I'll be eating curds and whey all day!"

"Looks like the time issue isn't bothering your spider friend! Anyway, I don't care what time of the day it is, I'm going to eat plum pie all the time now!"

CLUE 5 - Below is a set of clue riddles or definitions to words written in the reading section above. The blank lines represent missing letters in the word. As you fill in a letter on each blank line, match that letter with the number underneath into the empty boxes to reveal a clue! The first one is already done.
→ **Highlight the word answers in the text above as evidence.**

A baked dish of fruit, or meat/vegetables, with a top and base of pastry.	p	i								
Unusual or surprising; difficult to understand or explain.	s		r	a	n	g				
A type of stone fruit.	p					m				
A meal eaten in the morning.			r	e		k	f	a	s	
A creature with eight legs.						i	d	e		
Something that Miss Muffet is eating.				r	d	s	and		h	e
It has sixty minutes.								u	r	
A built up area with a name.								w		
Something that Miss Muffet is doing at the café.	e	a			i					

3 17 4

I

13 14 5 11 12 1 22

15 8 23 19 10

9 18

7 2

16 20 6 21 24

SOLVE THE MYSTERY!

ONCE UPON A CRIME: STOLEN TIME

WHO stole the magical clock hands and is messing with the time?

In the space below, write a list of the clues that you discovered during your investigation. Include a brief outline explaining how each clue helped you decide which suspects to eliminate from your list.

☐

☐

☐

☐

☐

☐

Well done!

Upon your brilliant discovery, Tale Town's Clock Tower Hands are immediately returned and the time is restored once again. Everyone in Tale Town cheers for your hard work on this case, great job Detective!

☐

Oops! Try again!

No, that is not who stole the clock hands, go back, check your work and try again.

ANSWER SHEET – CLUE 1

Peering up at the tall tower, you notice that the two hands are missing from the giant clock face.

Little Red



"Detective, over here! Look, I locked the clock tower door last night at six O'clock p.m. Strangely it is still locked!"

Little Red waves for you to go inside the door at the bottom of the tower.



You observe the following:

- ☐ The entry door lock isn't broken
- ☐ There is no sign of a forced entry
- ☐ A screwdriver has been left on the floor next to a bottle of red fizzy drink.

"The thief must have stolen the key from my place to get inside so easily. No one else in town has a key to this clock tower!"



CLUE 1

Fill in the missing letters to complete the answers in the comprehension questions below. Then match the letters with the numbers into the empty boxes to reveal a clue! The first one is done for you.

Use the reading text above to answer the questions below:

- What is missing from the giant clock face? The t₁ w₂ o₃ h₄ a₅ n₆ d₇ s₈.
- Who is the only person that owns the key to Tale Town's Clock Tower? L₉ i₁₀ t₁₁ t₁₂ l₁₃ e₁₄ R₁₅ e₁₆ d₁₇.
- When did Little Red lock the clock tower door? L₁₈ a₁₉ s₂₀ t₂₁ n₂₂ i₂₃ g₂₄ h₂₅ t₂₆ a₂₇ t₂₈ s₂₉ i₃₀ x₃₁ O'₃₂ c₃₃ l₃₄ o₃₅ c₃₆ k₃₇ p₃₈ m₃₉.
- What do you notice about the door lock? T₄₀ h₄₁ e₄₂ d₄₃ o₄₄ o₄₅ r₄₆ l₄₇ o₄₈ c₄₉ k₅₀ i₅₁ s₅₂ n₅₃ '₅₄ t₅₅ b₅₆ r₅₇ o₅₈ k₅₉ e₆₀ n₆₁.
- How does Little Red think the thief gained entry? T₆₂ h₆₃ e₆₄ t₆₅ h₆₆ i₆₇ e₆₈ f₆₉ m₇₀ u₇₁ s₇₂ t₇₃ h₇₄ a₇₅ v₇₆ e₇₇ s₇₈ t₇₉ o₈₀ l₈₁ e₈₂ n₈₃ t₈₄ h₈₅ e₈₆ k₈₇ e₈₈ y₈₉ t₉₀ o₉₁ g₉₂ e₉₃ t₉₄ i₉₅ n₉₆ s₉₇ i₉₈ d₉₉ e₁₀₀ s₁₀₁ o₁₀₂ e₁₀₃ a₁₀₄ s₁₀₅ i₁₀₆ y₁₀₇.
- Where does Little Red keep the key? A₁₀₈ t₁₀₉ t₁₁₀ h₁₁₁ e₁₁₂ r₁₁₃ p₁₁₄ l₁₁₅ a₁₁₆ c₁₁₇ e₁₁₈.
- What do you find on the floor? A₁₁₉ s₁₂₀ c₁₂₁ r₁₂₂ e₁₂₃ w₁₂₄ d₁₂₅ r₁₂₆ i₁₂₇ v₁₂₈ e₁₂₉ r₁₃₀ a₁₃₁ n₁₃₂ d₁₃₃ a₁₃₄ b₁₃₅ o₁₃₆ t₁₃₇ t₁₃₈ l₁₃₉ e₁₄₀ f₁₄₁ r₁₄₂ e₁₄₃ d₁₄₄ f₁₄₅ i₁₄₆ z₁₄₇ z₁₄₈ y₁₄₉ d₁₅₀ r₁₅₁ i₁₅₂ n₁₅₃ k₁₅₄.

M	E	D	I	U	M	S	I	Z	E	D					
25	30	37	14	26	17	13	5	41	29	8					
F	I	N	G	E	R	P	R	I	N	T	S	A	R	E	
39	23	38	11	24	19	34	40	31	3	12	9	35	21	7	
O	N	T	H	E	S	C	R	E	W	D	R	I	V	E	R
16	10	6	2	22	4	15	36	28	1	32	42	20	27	18	33

Go to your suspect list and use the clue discovered on this page to cross off who is no longer a suspect.

ANSWER SHEET – CLUE 2

Greeted by Little Red's grandma, you're pleased to be served some delicious lemonade and strange biscuits.



Granny Smith



"This time mess is making baking very difficult. Even when I set my timer on, it pauses and rewinds back and forth like crazy! So, please forgive me if the biscuits are not the best tasting today."

Little Red



"Granny, did you see anyone around our cottage yesterday? I think someone stole the clock tower key and then must've put it back before the morning!"

Granny Smith



"I heard some rustling around the garden late last night. It wasn't windy, so I went to take a look to see if that cheeky rabbit was back stealing my berries. All I found was a broken thorny branch fallen from my rose bush. A button was caught on one of the thorns."

Little Red



"OH! The button is probably off the thief's clothing! "

CLUE 2: Fill in the missing letters to complete the CAUSE and EFFECT statements below. Then match the letters with the numbers into the empty boxes to reveal a clue! The first one is done for you.
Use the reading text above to help!

CAUSE: Gra¹n²ny's tim³e⁴r keeps flicking b⁵a⁶ck and f⁷o⁸rth.

EFFECT: So, Granny is finding it ⁹d¹⁰ifficult to ¹¹b¹²ake.

CAUSE: Granny ¹³h¹⁴ear¹⁵d some ¹⁶r¹⁷ustling aro¹⁸u¹⁹nd the gar²⁰d²¹en la²²t²³e last ²⁴n²⁵ight.

EFFECT: She went to check if that cheek²⁶y²⁷ ²⁸r²⁹abbi³⁰t³¹ was back stealing berries.

CAUSE: The thie³²f³³ ³⁴e³⁵scaped bef³⁶o³⁷re Granny got to the gard³⁸e³⁹n.

EFFECT: All Granny fo⁴⁰u⁴¹nd was a broke⁴²n⁴³ thorny branch with a bu⁴⁴t⁴⁵ton.

CAUSE: The th⁴⁶i⁴⁷ef's clo⁴⁸t⁴⁹hing got caught on a thorny r⁵⁰o⁵¹se bush branch.

EFFECT: A button was left behin⁵²d⁵³ on one of the t⁵⁴h⁵⁵orns.

Y O U
13 18 9

F I N D
16 23 12 5

R E D
8 19 26

T H R E A D
22 27 14 2 3 10

O N
25 1

T H E
15 7 17

B U T T O N
6 20 11 24 4 21



ANSWER SHEET CLUE 3

You and Little Red are walking down Muffin Lane. You notice a crowd of angry citizens.

Nivens McTwisp



"It's all your fault! You are the one with the key to the tower; and the only one with access! I've been late for three very important dates! "

Polly Piggles



"Why would someone steal your key and then go to the effort of returning it?"

Little Red



"No! It wasn't me! Someone stole my clock tower key and returned it!"

"The thief must be trying to make it look like it was me!"

Sheriff Star



"Little Red, you are under arrest for the theft of Tale Town's Clock Tower Hands and for messing with the time. You will remain behind bars until you confess to the crime or proven innocent!"

As Sheriff Star gives the order, Little Red is handcuffed and taken to a cell in Tale Town's dungeon. Little Red looks at you helplessly as she pleads her innocence.

CLUE 3 - Fill in the missing letters to complete the answers in the comprehension questions below. Then match the letters with the numbers into the empty boxes to reveal a clue!

1. Why is Nivens McTwisp angry with Little Red? **Because he blames Little Red for being**
la_t_e to t_hree very important da_t_es.
1 2 3
2. Why doesn't Polly Piggles believe Little Red? **Because Polly doesn't understand w_h_y the**
4
thief would go to the _e_f_fort of returning the key.
5 6
3. What does Little Red think the thief is doing? **The thief is tr_y_ing to make it look like it was**
7
h_e_r who _s_tole the clock tower hands.
8 9
4. How long will Little Red remain behind bars? **Unti_l_ she confe_s_ses to the cr_i_me or is**
10 11 12
proven _i_nnocent.
13

T	H	E
3	2	5

T	H	I	E	F
1	4	12	8	6

I	S
13	9

S	L	Y
11	10	7

ANSWER SHEET – CLUE 4

You return to your office to think about what could have happened. You still don't have enough evidence to solve this case.

Strangely, a note has been left right next to your computer. You stop to read it to see if you can find any evidence in the text:

Dear Detective,

I went for a walk late last night. It was 11:00 p.m., when I walked past Tale Town's Clock Tower. I noticed someone taking off the clock hands, so I hid behind a nearby tree to watch what was going on. Unfortunately, it was too dark for me to identify the thief. They disappeared for a moment, but then I saw the thief opening the bottom door and throwing something small inside; it looked like a tool. Afterwards, the thief continued to walk over to Little Red's house. Unfortunately, I didn't get a chance to see anything else. Out of fear for being out past midnight, I ran back home.

From,
Cinderella

CLUE 4 - Fill in the missing letters to complete the answers in the questions below. Then match the letters with the numbers into the empty boxes to reveal a clue!

Use the letter above to help!

- 1. WHO wrote the letter? C i n d e r e l l a
1 2 3
- 2. WHEN did Cinderella see the thief removing the clock hands? La t e l a s t n i g h t t a t
4 5
e l e v e n O'clock p .m.
6 7 8
- 3. WHERE did Cinderella hide? She h i d b e h i n d a n e a r b y t r e e.
9 10 11 12 13
- 4. WHAT did the thief throw inside the door? Some t h i n g s m a l l t h a t l o o k e d l i k e a t o o l.
14 15 16 17
- 5. WHERE did the thief go after leaving the clock tower? T o L i t t l e R e d ' s h o u s e.
18 19 20
- 6. WHY was the thief unable to be identified? B e c a u s e i t w a s t o o d a r k.
21
- 7. WHY did Cinderella run back home? O u t o f f e a r f o r b e i n g o u t p a s t m i d n i g h t h t.
22 23 24

T

H

E

4

10

6

T

H

I

E

F

16

9

1

13

22

H

A

S

19

3

15

T

H

E

14

24

2

P

O

W

E

R

8

17

21

7

11

T

O

5

20

F

L

Y

23

18

12

ANSWER SHEET – CLUE 5

You head over to The Three Little Pigs Café to buy some food.

Little Miss Muffet



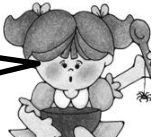
"With time all over the place I feel like as if I am going crazy! No wonder why there is so much chaos in town. I don't understand why anyone would bother to play with time like this, all it does is drive everyone crazy."

Georgie Porgie



"It's so strange! I looked so much older an hour ago, now I look years younger. This is all so confusing!"

Little Miss Muffet



"I don't even know if it's breakfast, lunch or supper. I guess I'll be eating curds and whey all day!"

"Looks like the time issue isn't bothering your spider friend! Anyway, I don't care what time of the day it is, I'm going to eat plum pie all the time now!"

CLUE 5 – Below is a set of clue riddles or definitions to words written in the reading section above. The blank lines represent missing letters in the word. As you fill in a letter on each blank line, match that letter with the number underneath into the empty boxes to reveal a clue! The first one is already done.

A baked dish of fruit, or meat/vegetables, with a top and base of pastry.	p	i	e							
	1	2								
Unusual or surprising; difficult to understand or explain.	s	t	r	a	n	g	e			
	3						4			
A type of stone fruit.	p	l	u	m						
	5	6								
A meal eaten in the morning.	b	r	e	a	k	f	a	s	t	
	7			8					9	
A creature with eight legs.	s	p	i	d	e	r				
	10	11				12				
Something that Miss Muffet is eating.	c	u	r	d	s	and	w	h	e	y
	13	14					15		16	
It has sixty minutes.	h	o	u	r						
	17	18								
A built up area with a name.	t	o	w	n						
	19	20		21						
Something that Miss Muffet is doing at the café.	e	a	t	i	n	g				
	22		23		24					

T H E
3 17 4

C U L P R I T
13 14 5 11 12 1 22

W A N T S
15 8 23 19 10

T O
9 18

B E
7 2

Y O U N G
16 20 6 21 24

ELIMINATION OF SUSPECTS

Suspect	Appearance	Character Traits	Has the ability to Fly? Yes/No	Clothing Colors	Motive
Little Red	<ul style="list-style-type: none"> - Brown Hair - Blue Eyes - Short - Medium Sized 	<ul style="list-style-type: none"> - Curious - Friendly - Anxious - Adventurous 	NO	<ul style="list-style-type: none"> - Red - Blue - White 	Wants a second chance
Zelda the Witch of the West	<ul style="list-style-type: none"> - Red Hair - Green Eyes - Tall - Medium Sized 	<ul style="list-style-type: none"> - Lonely - Unfriendly - Sly - Cruel 	YES	<ul style="list-style-type: none"> - Black - Green - Red 	Wants to cause chaos in Tale Town
Nivens McTwisp the White Rabbit	<ul style="list-style-type: none"> - White Fur - Blue Eyes - Short - Small Sized 	<ul style="list-style-type: none"> - Anxious - Energetic - Rude - Impatient 	NO	<ul style="list-style-type: none"> - Orange - Red - Gray 	Never wants to be late again
Bert the Big Bad Wolf	<ul style="list-style-type: none"> - Black fur - Brown Eyes - Tall - Large Sized 	<ul style="list-style-type: none"> - Cruel - Sly - Strong - Energetic 	NO	<ul style="list-style-type: none"> - Red - Green - Black 	Wants revenge
Rumpelstiltskin	<ul style="list-style-type: none"> - Blonde Hair - Brown Eyes - Tall - Medium Sized 	<ul style="list-style-type: none"> - Cheerful - Sly - Funny - Selfish 	NO	<ul style="list-style-type: none"> - Brown - Red - Orange 	Wants revenge
Pinocchio	<ul style="list-style-type: none"> - Black Hair - Blue Eyes - Short - Small Sized 	<ul style="list-style-type: none"> - Friendly - Dishonest - Foolish - Selfish 	NO	<ul style="list-style-type: none"> - Orange - Blue - Red 	Wants a second chance
Granny Smith	<ul style="list-style-type: none"> - White hair - Blue Eyes - Short - Medium Sized 	<ul style="list-style-type: none"> - Courageous - Generous - Calm - Caring 	NO	<ul style="list-style-type: none"> - Green - Blue - White 	Wants to be young again
Polly Piggles	<ul style="list-style-type: none"> - Blonde Hair - Brown Eyes - Short - Medium Sized 	<ul style="list-style-type: none"> - Foolish - Caring - Greedy - Cheerful 	NO	<ul style="list-style-type: none"> - Red - Blue - Black 	Wants revenge
Peter Pan ANSWER	<ul style="list-style-type: none"> - Red Hair - Brown Eyes - Tall - Medium Sized 	<ul style="list-style-type: none"> - Adventurous - Foolish - Sly - Cheerful 	YES	<ul style="list-style-type: none"> - Green - Red - Brown 	Wants to be young again
The Mad Hatter	<ul style="list-style-type: none"> - Red Hair - Green Eyes - Short - Medium Sized 	<ul style="list-style-type: none"> - Foolish - Friendly - Anxious - Generous 	NO	<ul style="list-style-type: none"> - Green - Brown - Red 	Wants a second chance

Tale Town's Clock Tower Fixed!

Date: _____

**Thanks to the amazing
detective work of**

**Time has been fixed and all
back to normal again.**



It's about time that this time mess was fixed, and thanks to Detective _____, the thief, Peter Pan, has been arrested and Tale Town's Clock Tower is fixed.

Peter Pan pleaded as Sheriff Humbert took him to the police station, "I just didn't want to grow old! I wanted to be young again. I meant no harm to anyone else, I'm sorry!"

No matter the reason, Peter Pan must make up for the crime that he has committed. The chaos and panic in town made many upset, and theft is a serious felony! Sheriff Humbert stated, "I'll be keeping Peter behind bars until I decide on a way he can make it up to the folk of Tale Town."

Thankfully, with the return of the magical clock hands, the time has settled back to how it should be. Everyone is calm and happy again.

A big THANK YOU to the wonderful work of Detective _____.

Tale Town's Clock Tower Fixed!

Date: _____

**Thanks to the amazing
detective work of**

**Time has been fixed and all
back to normal again.**



It's about time that this time mess was fixed, and thanks to Detective _____, the thief, Peter Pan, has been arrested and Tale Town's Clock Tower is fixed.

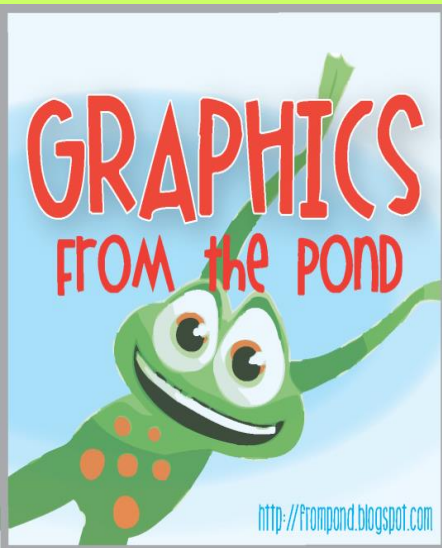
Peter Pan pleaded as Sheriff Humbert took him to the police station, "I just didn't want to grow old! I wanted to be young again. I meant no harm to anyone else, I'm sorry!"

No matter the reason, Peter Pan must make up for the crime that he has committed. The chaos and panic in town made many upset, and theft is a serious felony! Sheriff Humbert stated, "I'll be keeping Peter behind bars until I decide on a way he can make it up to the folk of Tale Town."

Thankfully, with the return of the magical clock hands, the time has settled back to how it should be. Everyone is calm and happy again.

A big THANK YOU to the wonderful work of Detective _____.

Graphics & Fonts By:



Vector Open Stock.com

MyCuteGraphics

A Turn to Learn

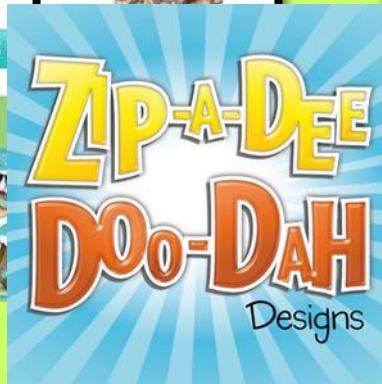
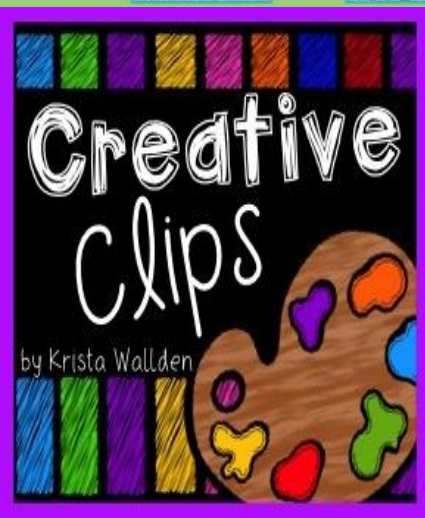
CLOUDY ARTS



Fonts by The Learning Tree

Vladimir Zuñiga
Foca.tk

CLIPART Lord -
<http://www.clipartlord.com/>



Thank You!